

PAPER TRAY UNIT
(Machine Code: G399)

ENVELOPE FEEDER
(Machine Code: G807)

1. REPLACEMENT AND ADJUSTMENT

CAUTION

Turn off the main power switch and unplug the machine before you do any of the procedures in this section.

1.1 PAPER FEED UNIT

Refer to the G555 Service Manual for details

1.2 PAPER FEED ROLLER





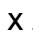
Refer to the G555 Service Manual for details

1.3 FRICTION PAD

Refer to the G555 Service Manual for details

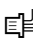

1.4 PAPER FEED CLUTCH

Refer to the G360 Service Manual for illustration. (Although this is the Service Manual for the G112/G113 machines, the procedures are the similar. However they are not in the same order)

1. Motor Bracket [C] ( x 3)
2. Paper feed gear [B] ( x 1)
3. Paper feed clutch [A] (1 gear, 1 hook,  x 1)
4. Motor [D] ( x 2,  x 1)

1.5 PAPER TRAY BOARD

Refer to the G360 Service Manual for details. (Although this is the Service Manual for the G112/G113 machines, the procedures are the similar. However they are not in the same order)

1. Paper tray board (2 hooks,  x 4,  x 2)

1.6 PAPER SIZE SWITCH

Refer to the G360 Service Manual for details. (Although this is the Service Manual for the G112/G113 machines, the procedures are the same)

2. DETAILED DESCRIPTIONS

2.1 OVERALL MACHINE INFORMATION

2.1.1 MECHANICAL COMPONENT LAYOUT

Refer to the G555 Service Manual for details

2.1.2 ELECTRICAL COMPONENT LAYOUT

Refer to the G555 Service Manual for details

2.2 DETAILED DESCRIPTIONS

2.2.1 PAPER FEED AND SEPARATION

Refer to the G555 Service Manual for details

2.2.2 PAPER LIFT

Refer to the G555 Service Manual for details

2.2.3 PAPER END DETECTION

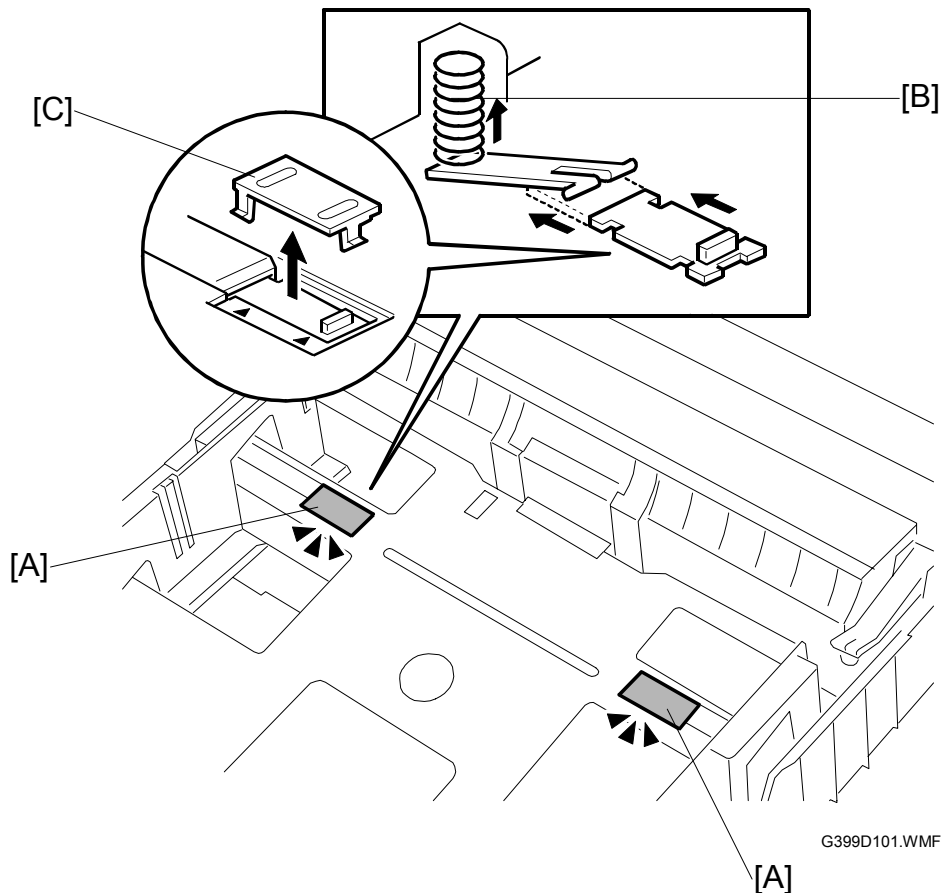
2.2.4 REMAINING PAPER DETECTION

Refer to the G555 Service Manual for details

2.2.5 PAPER SIZE DETECTION

Refer to the G555 Service Manual for details

2.2.6 PAPER PRESSURE SWITCH



G399D101.WMF

The paper pressure switches [A] slide from left to right and from right to left. The switch is used to increase upward pressure on the paper from the bottom plate. This helps to prevent paper misfeeds.

Do this procedure to use the paper pressure switch:

- 1) Remove the two plastic latch covers [C].
 - Be very careful when you remove these latches. They break very easily.
 - Use a small screwdriver to remove the latches.
- 2) Slide the paper tension switches [A] away from the center of the paper tray unit.
- 3) Replace the plastic latches [C]

The springs [B] increase the tension from the bottom plate when you move the paper pressure switches. At this time more pressure is applied to the paper.

Only use this procedure if the customer complains about paper misfeeds, especially double feed conditions. Otherwise the switch should not be used. The default position is “not set”, or, both switches pushed toward the center of the paper tray unit.

Name	Rating	Manufacturer	Type No.
FU500	DC50V/1.5A	ROHM CO. LTD	ICP-N38

3. ENVELOPE FEEDER

3.1 OVERALL MACHINE INFORMATION

3.1.1 MECHANICAL COMPONENT LAYOUT

Refer to the G555 Service Manual for details